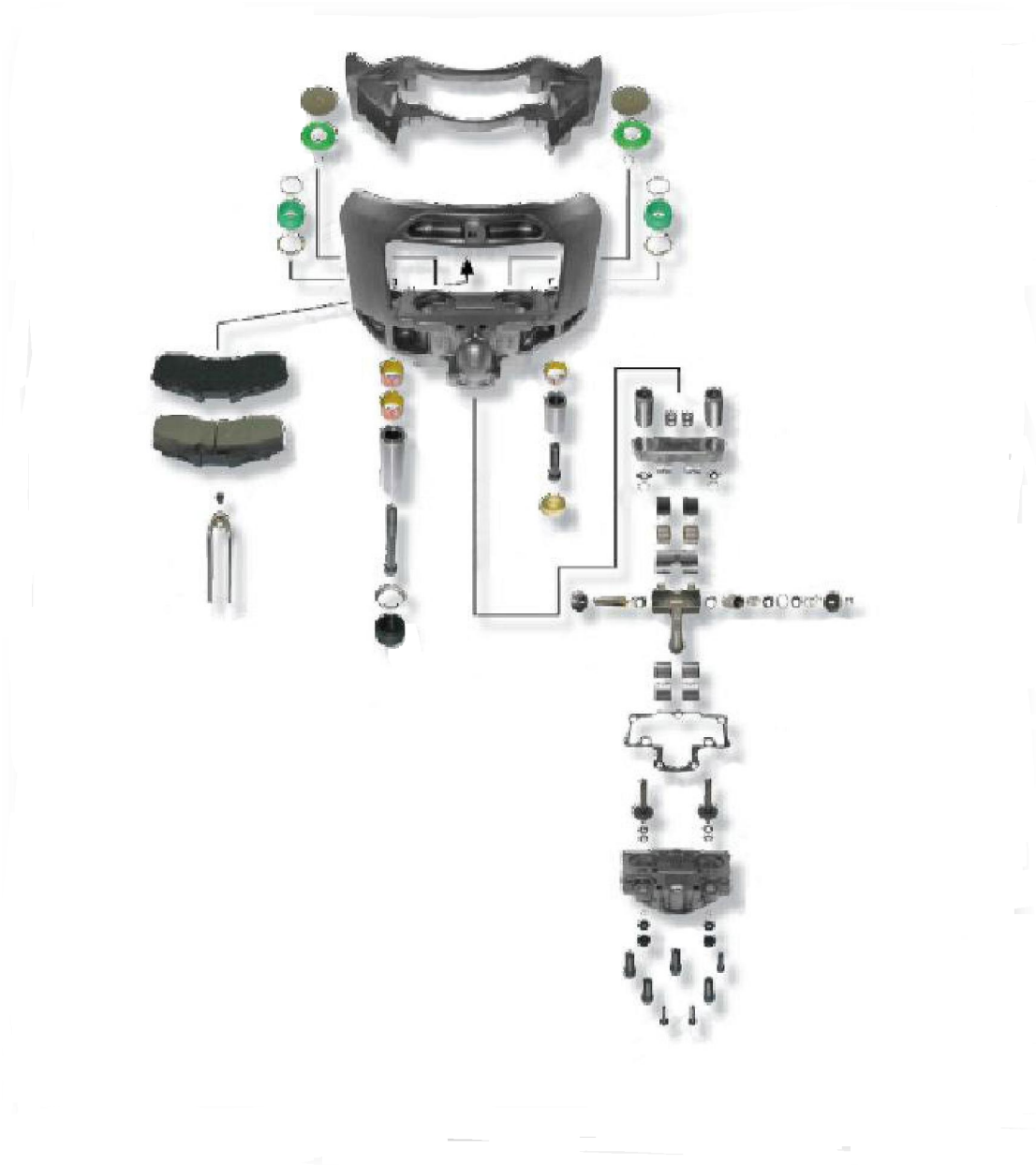


WABCO 22-2



Wabco Repair Kits - PAN 19-2 / 22-2 Series

3201 - PAN 19-2 / 22-2

Caliper Guides, Seals & Piston Repair Kit



	REF	DESCRIPTION	DIMENSION	QTY	
3201	01	3503	GUIDE PIN (SHORT)	38 x 76 mm	1
	02	3504	GUIDE PIN (LONG)	38 x 118 mm	1
	03	1513	BOLT (SHORT)	M16x1,5 x 80 mm	1
	04	3514	BOLT (LONG)	M16x1,5 x 120 mm	1
	05	3522	GUIDE PIN BUSH	42 x 38 x 30 mm	3
	06	3534	GUIDE PIN GAITER		2
	07	3536	PISTON HEAD WITH SEALING	Ø69,50 mm	2
	08	3542	STEEL COVER (SHORT)		1
	09	3543	STEEL COVER (LONG)		1
	10	3551	PLUG		2

3202 - PAN 19-2 / 22-2

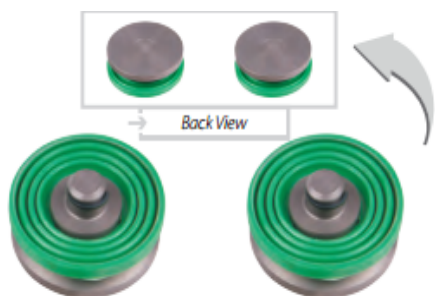
Caliper Guides & Seals Repair Kit



	REF	DESCRIPTION	DIMENSION	QTY	
3202	01	3503	GUIDE PIN (SHORT)	38 x 76 mm	1
	02	3504	GUIDE PIN (LONG)	38 x 118 mm	1
	03	1513	BOLT (SHORT)	M16x1,5 x 80 mm	1
	04	3514	BOLT (LONG)	M16x1,5 x 120 mm	1
	05	3522	GUIDE PIN BUSH	42 x 38 x 30 mm	3
	06	3534	GUIDE PIN GAITER		2
	07	3542	STEEL COVER (SHORT)		1
	08	3543	STEEL COVER (LONG)		1

3203 - PAN 19-2 / 22-2 TYPES

Caliper Piston Head Repair Kit

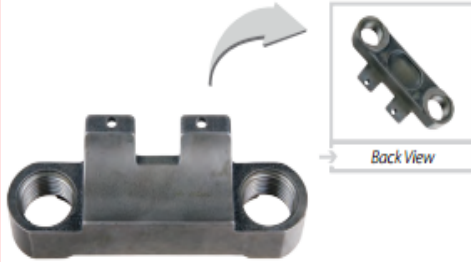


	REF	DESCRIPTION	DIMENSION	QTY	
3203	01	3536	PISTON HEAD WITH SEALING	Ø69,50 mm	2

Wabco Repair Kits - PAN 19-2 / 22-2 Series

3204 - PAN 19-2 / 22-2

Caliper Bridge Assembly



3205 - PAN 19-2 / 22-2

Caliper Calibration Bolt (Left)



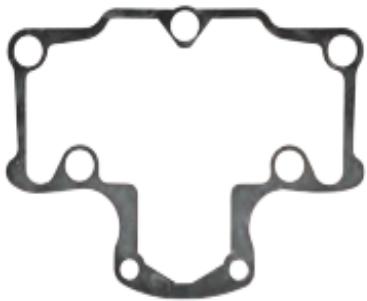
3206 - PAN 19-2 / 22-2

Caliper Calibration Bolt (Right)



3207 - PAN 19-2 / 22-2

Caliper Cover Gasket



3208 - PAN 19-2 / 22-2 TYPE

Caliper Gasket & Bolts Repair Kit



3209 - PAN 19-2 / 22-2 TYPE

Caliper Outer Roller Bearing



3210 - PAN 19-2 / 22-2 TYPE

Caliper Inner Roller Bearing



16247 - PAN 19-2 / 22-2

Caliper Mechanism Gear Set Right



16248 - PAN 19-2 / 22-2

Caliper Mechanism Gear Set Left



Wabco Repair Kits - PAN 19-2 / 22-2 Series

16318 - PAN 19-2 / 22-2

Caliper Mechanism Pin Set



16447 - PAN 19-2 / 22-2

Caliper Mechanism Repair Set



16530 - PAN 19-2 / 22-2

Caliper Lever



16740 PAN 19-2 / 22-2

Caliper Lever with Mechanism



16257 - PAN 19-2 / 22-2 TYPE

Caliper Bearing Saddle



16419 - PAN 19-2 / 22-2 TYPE

Caliper Lever Pin



16617 - PAN 19-2 / 22-2 TYPE

Caliper Lever Mechanism Repair Kit



Wabco Repair Kits - PAN 19-2 / 22-2 Series

19.5" / 22.5" Double Piston

